

President's Message

by Barry McNeill, 2013-2014 ASURA President

As with many past presidents who have written the president's piece for *Prime Times*, I found it hard to believe it was time for the third and final piece. A year seems like a long time but before you know it the year is up.

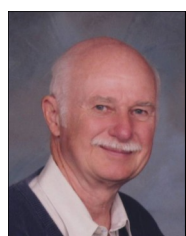
In the fall I reported that the Board had approved surveying you to help tackle the following strategic goals:

Goal 1 – Increase Membership

Goal 2 – Better Serve our Members

Goal 3 – Review Community Outreach Portfolio

I can report that four survey groups created a set of sample questions and a team composed of Bill Moor, Gary Kleemann, Glenn Irvin, Elmer Gooding, and I took these questions and created three surveys, one for members, one for members who have not renewed, and one for ASU retirees who have never joined ASURA. The surveys were tested, modified and prepared for distribution in January. For more information see an accompanying article.



If you have not already received your invitation to take the survey you will very shortly and I hope you will take the time to complete it. I am pretty sure I know how the Board feels about the issues raised in the survey; I am also pretty sure **I do not**

know how the many non ASURA Board members feel about these issues. Your input is crucial.

There was a fourth strategic goal: How to ensure long term health of the Association, which the Board has been discussing. The discussion has focused on the need to have volunteers to carry out the various ASURA tasks, e.g., publishing *Prime Times*, organizing seminars and informative programs, staffing the ASURA office, keeping an eye on the health insurance, selecting a scholarship recipient, etc. None of this is possible without volunteers. The key to long term health is a mix of new and experienced volunteers; we cannot survive without new volunteers.

We have a busy spring with Retirees Day in February, a seminar in March, the Annual Meeting in April and another travel and luncheon event. I hope some of these events sound interesting and that you are able to attend.

I would like to end with a special thanks to Jeannette Robson who lays out *Prime Times* and gives us the professional newsletter we all have come to expect. This is Jeannette's last *Prime Times* and she deserves our sincere thanks. As Jeannette leaves there is an opening for a new volunteer; so if you are interested in maintaining the quality of *Prime Times* please step forward and volunteer; Jeannette will gladly show you the ropes and help you with your first edition. You can contact Jeannette at jrobson@asu.edu or me at barry_mcneill@cox.net.

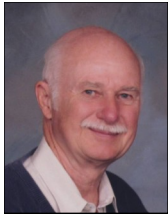
Inside this Issue

ASURA Board of Directors and Other Volunteers	2
Your Book Donation = Needed Scholarships	3
2013-2014 ASURA Re-entry Scholarship Awarded	3
ASURA Video History Project, Spring 2014	4
ASURA Member Survey	5
Fall 2013 Luncheon at Friendship Village	5
Holiday Performance - Spirit of Phoenix Chorus	5
Living Arrangement Options for Seniors Seminar	6

2013 Veteran's Day Golf Tournament	6
2013 ASURA Health Care Seminar, Fall 2013	6
January 2014 Legislative Update	7
2014 ASURA Calendar of Events	7
Luncheon & Wine Tasting Wellness Seminar	8
Retirees Day and Annual Meeting	8
On The Road Again!	9
Obituaries	10-11

ASURA Board Officers

President
Barry McNeill



Vice President
Jo Madonna



Past President
William Moor



Secretary
Glenn Irvin



Treasurer
Barry Bruns



ASURA Board of Directors and Ex-Officio Members

**Terms Expire
April 2014**

Art Ashton
Barry Bruns
Barbara Eschbach
William Moor
Jeannette Robson
David Schwalm

**Terms Expire
April 2015**

Elmer Gooding
Dick Kelly
Gary Kleemann
Barry McNeill
Bill Stasi

**Terms Expire
April 2016**

Cecelia Fiery
Karen Hammann
Glenn Irvin
Jo Madonna
Jan Thompson
Hal White

Ex-Officio Members

Alumni Association - Rhonda McClintock
Emeritus College Liaison - Elmer Gooding
Human Resources - Sheree Barron
Public Affairs - Barbara Shaw-Snyder and Abby Polito
University Club Liaison - Jim Fordemwalt
University Senate - Thomas Schildgen
University Staff Council - Trudy Perez

Committees & Liaisons

ADOA Health Liaisons:

Art Ashton
Patricia Moore
Phyllis Primas

Adopt-A-Family:

Joan Leard

ASRS Liaison: Open

ASRS Health Liaison: Open

ASURA History Book:

Val Peterson

Book Donations:

Mary Stevens

Events:

Jo Madonna

Finance:

Barry Bruns

Golf Tournament:

Dave Schwalm

Luncheons/Special Events:

Barbara Eschbach

Membership:

David Schwalm

Obituaries:

Becky Reiss

Prime Times Newsletter:

Wilma Mathews (Editor)
Jeannette Robson
(Designer)

Retirees Day:

Barry McNeill

Scholarship:

Sue Blumer &
Joy Shearman

Seminars:

Jan Thompson

State Legislature Liaison:

Open

Travel:

Gary Anderson

Video History Project:

Linda Van Scoy

Web Site & Data Base:

Connie McNeill

ASURA Office Staff

Phone

480-965-7668

Fax

480-965-7807

Web Site

<http://asura.asu.edu/>

Location

Community Services Building
200 East Curry Road, Room 201B
Tempe, AZ

Business Operations Manager

Carolyn Minner

Coordinator, Office Staff

Carol Moore

Monday

Carol Berg - a.m.
Jeannette Robson - p.m.

Tuesday

Carol Moore - a.m.
Linda Van Scoy - p.m.

Wednesday:

Nancy Lesko - a.m.
Open - p.m.

Thursday:

Bonnie Scheall - a.m.
Mary Williams - p.m.

Friday:

Anna Marie Shivers - a.m.
Open - p.m.

Subs:

Joan Leard
Helen Seaton
Dorothy Meunier
Maxine LaRoux

Your Book Donation = Needed Scholarship



Now that you're settled (or still getting settled) in your retirement from ASU, you – like many of us – may find that you have more books in your home or office than you know what to do with. ASURA can help solve that problem and, in the process, help a deserving student complete his or her studies.



ASURA collects donated books and sells them online through an established vendor, who splits the sales proceeds with ASURA. Proceeds are put toward ASURA's annual scholarship, which currently is \$10,000. The student who is selected is either a returning student (one who has been away from higher education studies for a period of time) or to a community college student, based on financial and other criteria.

Tomas Espinosa was selected by the ASURA to receive this scholarship for the 2013-14 academic year. Like his predecessors, Tomas must: be a full-time student, complete a minimum of 24 semester hours during the academic year, attain a minimum 2.50 GPA, and make a short presentation at the ASURA annual meeting in April, 2014.

Donation books can be delivered to the ASURA office in the Community Services Building, Room 201B, 200 East Curry Road in Tempe. You will receive a gift tax receipt from the ASU Foundation, which administers ASURA's accounts.

For more information contact:

Mary Stevens - marystevens0@gmail.com (602-758-3750)

Bill Moor - william.moor@asu.edu (480-838-8348)

Welcome New ASURA Members

Cherie Hudson

Lawrence Orr

Irwin Sandler

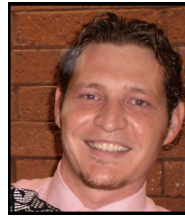
2013-2014 ASURA Re-entry Scholarship Awarded

by Cynthia Blumer

The ASURA Scholarship Committee is pleased to announce the awarding of the 2013-14 re-entry scholarship to Tomas Espinosa, who is pursuing a B.S.E. in mechanical engineering on the Tempe campus after his transfer from Phoenix College. Mr. Espinosa offered a superb academic record, significant community service, and focused academic and career goals.



In his personal statement, Mr. Espinosa described his interest in energy technology and the "need to continue to provide efforts in the electrification of rural regions worldwide in order to decrease poverty and unhealthy living conditions." His community service includes meeting and mentoring political refugees from Yemen, Iraq, Iran, and others and the "unique learning experience" from this diversity exposure. He has also performed volunteer community service in the historical downtown Phoenix area to remedy vandalism and to provide home health care and other help for the elderly and disabled.



The ASURA Re-entry Scholarship provides a \$10,000 scholarship to an entering ASU student who has not attended high school for at least five years. Applicants are considered on the basis of their academic achievement and goals, financial need, community service, and other personal factors based on a personal statement. ASU students are facing increasing tuition costs and rigorous class schedules that enhance the value of a significant scholarship like one provided by ASURA.

Invite a Friend

Do you have friends who retired from ASU but are not members of ASURA? Or perhaps you have friends who retired from another university or worked at ASU in the past but left and have now retired elsewhere?

If so **invite them to become members of ASURA** and the best part is that it is free for the first year. Ask them to go to our Web site (<http://asura.asu.edu>) and click on the "Join the ASURA" link in the left column to start the process or alternative call our Office at 480-965-7668 for help.

ASURA Video History Project, Spring 2014

by Linda Van Scoy

The Video History Committee has identified candidates to interview in 2014 and plans to complete about a dozen additional oral histories this spring and summer. We have been working during the fall to catch up with a backlog of editing which is a slow process. However, we have made a connection with Mark Tebeau, the new Director of Public History who believes there can be mutual benefit if Public History majors provide us with editing assistance during the summer. This is a win-win situation as students are looking for summer employment and they will gain hands-on experience in their field of study, and it will help us to make progress on the number of interviews finalized and converted to DVDs. We've also had meetings with the ASU Library Archivist, Rob Spindler, enlisting their support. Our goal is to store our videos on the Library Archive's server, ultimately making these available so that the public can view them online.

Good progress was made in completing additional video clips. Twenty-five have been added for your viewing pleasure. Below are the latest clips:

- Chuck Allen on Al Michaels getting a degree at ASU.
- Mat Betz talks about ASU in the 1960s.
- Quentin Bogart comments on President Harry Newburn.
- Don Dotts finds himself playing hooky with President Durham.
- Roy Doyle talks about ASU Bulldogs vs. the U of A in the very early days.
- Bob "Coach" Fleming recalls the best production of Stars and Stripes Forever.
- Jacob Fuchs describes how football trumps Chemistry.
- Elmer Gooding talks about 10 years of revertment at ASU.
- Mernoy Harrison charged with building the Downtown campus
- Gary Krahenbuhl recalls "difference makers" at ASU.
- Floyd Land talks relates Memorial Union bomb threats.
- Connie McNeill reports on bringing microcomputers to ASU.
- Carleton Moore describes the moon rock collection at ASU.
- George Morrell speaks to the very early days at ASU (1937)
- June Payne, relates her time with the Arizona Women's Press Club.
- Larry Penley on naming the naming of the W P Carey School
- Anne Pittman discusses women's athletics.
- Zeke Prust reveals the origin of the name Zeke.
- James Rapp talks about Freeway Art.

- Frank Sackton was aide to General Douglas MacArthur.
- Joseph Schabacker's other calling –acrobatics.
- Conrad Storar on "Don't Call Me Pig!"
- Rudy Turk reveals how ASU acquired the Maria Pots collection
- Guido Weigend and Daughter Cynthia Bueness remember the OSS.
- Bobby Winkles highlights his ASU baseball coaching career

To view these 2-3 minute snippets all you need to do is go to the VHP page, <http://asura.asu.edu/VideoHistory> and scroll down to the list of interviews. Those individuals with the words "video clip" following their information have a short clip you can view by clicking on the words "video clip". When the video appears, click on the play arrow and enjoy. It's just that easy. (For full screen click on the box that looks similar to this [] in the lower right hand corner.)

As always, if you want to look at the full interview for these or others interviews, call (965-7668), stop by or e mail the office and ask to check out one of the many DVDs available

We invite volunteers to join us.... We have been editing the interviews using iMovie software on a MAC computer. If anyone is interested in helping with the editing, we can provide training. Editing can be done at the AS-URA office, or in your home if you have a computer. Editing can also be done on a PC (Microsoft) using software such as Premiere.



(Video History Crew Members: Dave Scheatzle, Linda Van Scoy, John McIntosh, & Roger Carter)

ASURA Member Survey

by Barry McNeill

The ASURA Bylaws make it clear that ASURA exists for the purpose of serving retirees. The Bylaws assign to the ASURA Board the responsibility of managing the affairs of the Association. Over the years the Board has created a variety of programs and activities pursuant to its mission.

As the Board considers goals of building membership, delivering the type of information and activities you want, and maintaining desirable community outreach programs we need to know what you think, e.g.: "How aware are you of existing programs and activities?", "How important is it to have the current programs and activities?" and "How well is the Association carrying out its current programs and activities?"

To answer these plus some additional questions a Member Survey was created and will be distributed shortly after you receive *Prime Times*. How you get the survey will depend on whether you do or do not receive e-mails from ASURA. If you get ASURA e-mails you will receive an e-mail inviting you to take the survey online. If you do not get ASURA e-mails you will receive a paper survey in the mail along with a postage paid return envelope.

Those who receive the online invitation will have the option of downloading the paper version and mailing it in; likewise those who receive the paper survey will have the option of taking it online.

The survey has twenty-two numbered questions, each with a number of sub-questions and takes between 15 and 20 minutes to complete. It is organized into six general areas with questions pertaining to: (1) initially joining ASURA, (2) current ASURA activities and projects, (3) the types of information supplied by ASURA, (4) the communication methods used by ASURA, (5) future ASURA activities and projects, and (6) information about yourself.

If you do not receive either the e-mail invitation or the paper survey in the mail within a week of getting *Prime Times* please call the ASURA Office at 480-965-7668. The Board hopes you will take the time to complete the survey either online or by mail but not both please.

Fall 2013 Luncheon at Friendship Village

by Barbara Bradford Eschbach

The photos tell the story: The Skirm Auditorium of Friendship Village Tempe was the place to be at the November 2013 Luncheon and Live Music Program! This

event brought together 43 members and their guests for a light lunch, conversation, social interaction and music.



The musical program was provided by pianist/composer Richard Palalay and vocalist Lyn Jackson. Together Richard and Lyn filled the auditorium with a memorable program of

jazz standards and other familiar tunes. Richard pulled out all the stops with medleys by Andrew Lloyd Webber, where he probably touched every key on the piano!

Friendship Village graciously provided shuttle service to/from a nearby parking lot for the non-residents. We were very happy to see the familiar faces of our ASURA members who reside at Friendship Village!

Holiday Performance - Spirit of Phoenix Chorus

by ASURA Travel Committee

The Travel Committee planned an outing to coincide with the holiday season and help nudge us into the Christmas spirit.

On Saturday, December 7th, we attended the holiday performance by The Spirit of Phoenix Chorus entitled: "What the Dickens.....A Christmas Carol?" The concert was held at Skyline High School in Mesa. This humorous musical send-up of Dickens' original story was absolutely delightful. Scrooge was as bad as ever as he confronted the Christmases of Past, Present and Future. The songs of the chorus, including choreography, under the direction of Gary Steinkamp, had us all wishing the concert would never end. It was beautiful.

But it did end, and the ASURA folks in attendance headed off for a bit of a musical encore at the Organ Stop Pizza Restaurant. We enjoyed some tasty food and listened to the mighty Wurlitzer Pipe Organ, the largest in the world. It has nearly 6,000 pipes and can reproduce the sounds of 17 percussion instruments, such as drums, xylophones and glockenspiels. This time we did our own choreography as we swayed to the sounds of the mighty Wurlitzer.



Living Arrangement Options for Seniors Seminar

by Janice Meyer Thompson

A full house of 65 ASURA members enjoyed an interesting and highly informative seminar on "Living Arrangement Options for Seniors" on January 23 at the ASU Community Services Building. Martha Batista and Stephen Chung--President and Managing Partner of Assisted Transition, a professional senior living and care referral company located in Scottsdale--presented information on options ranging from independent living to skilled nursing facilities, and everything in between!

Their excellent powerpoint presentation included detailed descriptions of each category, comparisons, cost ranges, and tips on how to choose what's right for the individual. The audience was clearly engaged, as there was a lively exchange of questions and answers throughout and lots of positive feedback from the audience at the close of the seminar.



2013 Veteran's Day Golf Tournament

by Dave Schwalm (chair), Dave Scheatzle, Mernoy Harrison, and Gary McGrath

ASURA held its 7th Annual Veterans' Day Golf Tournament on 11 November, 2013, at ASU's Karsten Golf Course. It was a beautiful day for golf, and players started gathering at about 6:30 a.m. for a tee-off time of 7:45.

There to greet them, register them, and sell them raffle tickets were Lynda Van Scoy, Jack Sarrett, and Bonnie Scheall, volunteers from the ASURA Office. Fifty-three golfers played in this "scramble" tournament, with prizes for the top three foursomes and for the longest drive by a man and a woman and the drive closest to the hole on a par three.



A delicious BBQ lunch followed the tournament, and emcee Gary McGrath welcomed participants, recognized

Veterans in the group, awarded the golf prizes, and conducted the drawing for the raffle prizes, including jeep trips, theater and sporting event tickets, foursomes of golf, and ASU regalia. Each participant received a small door prize at the conclusion of the ceremony. The proceeds of the tournament, about \$3500, will be divided between the ASURA's Living History Video Project and our annual scholarship program.

We want to thank our "Major Sponsor" Sun Devil Campus Stores, our "Buffet Sponsor" Friendship Village, and our three "Hole Sponsors" Aramark, Arizona State Credit Union, and Sundt Construction.

Other supporters include Karsten Golf Course, ASU Gammage, ASU Athletics, Paul Matson, Fernando Morales, Susan Galbraith, Jim Newell, Kelli Nemece, Golfsmith and all of the ASURA office volunteers who managed registration and finances. Special thanks are due to Karsten Director of Golf Daryl Crawford and his staff for their highly professional help and support in both the planning and execution of the tournament.

2013 ASURA Health Care Seminar

by Janice Meyer Thompson

This year's ASURA Health Care Seminar couldn't have been more timely! The federal government had just reopened, the debt crisis was averted, and the Affordable Care Act was definitely "in the news" when 60 ASURA members and guests met on October 17th for a very informative session on a variety of health care topics of great interest to retirees.

David Parra, AARP Arizona representative, presented an overview of Medicare and all its complicated parts with great clarity, energy, and more than a touch of humor. David was assisted by volunteers Greg and Lisa Lund, who offered a breakdown of the Affordable Care Act and its impact on various groups. Their powerpoint explanations were augmented by easy-to-understand charts, distributed to the group and now available on the ASURA website (click on Health Insurance on the left side of the homepage).

ADOA representative Raquel Lind and ASRS representative Pat Klein followed with presentations on open enrollment for their respective organizations. Both answered a multitude of questions and provided written materials for all who desired them.

All in all, it was a jam-packed morning, full of important information presented by engaging and articulate speakers.



January 2014 Legislative Update

Governor Brewer and John Arnold, Director of the Office of Planning and Budget, rolled-out the Governor’s Fiscal Year 2015 budget proposal, building on the details she outlined in her:

State of the State address (http://azgovernor.gov/dms/upload/GS_011314_SOTS2014.pdf)

and

Four Cornerstones policy document (http://azgovernor.gov/dms/upload/PR_011314_FCR2014Edition.pdf).

Below is an outline of the Higher Education appropriations. We are happy to see that the executive has once again shown a commitment to investment in higher education by appropriating \$21.6 million to ASU for parity funding, which will help end the long standing disparity in per student funding among the universities. It is critical that the state invest in higher education - closing out parity funding at the carefully negotiated and agreed upon levels; fully funding and investing in the performance funding model created in partnership with the state; and providing needed and economically wise investments in research infrastructure.

We look forward to the legislative session and to continuing positive discussions with the Governor and legislature that move us closer to a final budget that supports our mission of providing access and excellence in higher education to the students of Arizona.

Governor’s Budget Proposal Highlights:

ASU: Parity - \$21.6 million
(our original request was \$25.1 million)

NAU: Parity - \$5.9 million

UA: Cooperative Extension - \$3.5 million

2014 ASURA Calendar of Events

Following is a current list of the activities and events scheduled for the coming year. Continue to check the website, <http://asura.asu.edu>, and your email for locations, details and updates as more information is available and new events added.

Spring

- Feb. 14 Play Ball! - Tour of Chase Field, 10:30 a.m. - noon, Phoenix
- Feb. 22 Retirees Day, 8:15 a.m. - 2:00 p.m., Memorial Union, 2nd Floor, ASU Tempe Campus
- Mar. 20 Wellness for Seniors: Backs, Bones, Muscles and More! 10:00 a.m. - noon, CSB 330
- Apr. 12 ASURA Annual Meeting, 1:00 - 3:00 p.m., Memorial Union, Alumni Lounge, ASU Tempe Campus
- May 15 Luncheon & Wine Tasting, 11:30 a.m. - 1:30 p.m, Dvine Bistro & Wine Bar
- May 15 ASURA "Russia Revealed" River Cruise, St. Petersburg to Moscow, (Return by May 30), **space limited to 18.**

Pending Trips/Tours

Late Spring 2014: Take the Train: Verde Canyon Railroad scenic tour

- Fall 2014:**
1. Tovrea Castle tour
 2. Four Corners trip

Volunteer for the ASURA

ASURA is operated entirely by volunteers. If you think you might enjoy working with fellow retirees to support the organization and its activities, please look over the list of volunteer opportunities detailed on Page 2 of our Membership Application Form. If you have an interest, please contact the ASURA office.

Luncheon & Wine Tasting

by Barbara Bradford Eschbach



Mark your calendar now for the final luncheon for the ASURA for 2013/14 on Thursday, May 15, 2014, 11:30pm to 1:30pm.

Instead of a luncheon speaker, we will have a luncheon and wine tasting with a professional sommelier provided by our host venue: Dvine Bistro & Wine Bar, located at 3990 S. Alma School Rd, Chandler AZ 85248 (northwest corner of Alma School and Ocotillo). After lunch, we can all go home and take a little "catnap!"

For a sneak preview go to: www.dvinebistro.com or contact Barbara Eschbach at Barbara.Eschbach@asu.edu or 480-209-0733.

Wellness for Seniors: Backs, Bones, Muscles & More!

by Janice Meyer Thompson



Want to stay (or get) healthy in 2014? Take advantage of the expert advice offered by 3 ASU professors from the School of Nutrition and Health Promotion in our next ASURA seminar, Thursday, March 20, 10 a.m. - Noon, CSB 330.

There's something of interest for everyone in this collaborative seminar covering aspects of back health, stretching, exercise, fall prevention, arthritis, and the role of protein and nutrition in maintaining muscle and bone health.

Register on the ASURA website or call the office at 480-965-7668.

Retirees Day and Annual Meeting

by Barry McNeill

Event: Retirees Day

Date: Saturday February 22, 2014

Time: 8:15 a.m. to 2:00 p.m.

Location: Memorial Union, 2nd Floor, ASU Tempe

The 21st ASURA Retirees Day program is fast approaching. This year's program, *The Three P's*, features presentations focusing on:

The Past: our human origins, rebuilding the Indigenous Nations of the American West, and how traditional knowledge shapes sustainability thinking

The Present: using jazz to teach history, genetics and conservation of desert plants, and how well is AZ K-12 education doing to prepare its graduates

The Phuture: the case for alien life, the future of space exploration, and the ethics of integrating technology into the human body.

As was the case last year there will be three morning sessions and each session will have a presentation focusing on the Past, the Present and the Phuture. The day will be capped off with a luncheon and a presentation, 50 Years of ASU Gammage, by Colleen Jennings-Roggensack, Executive Director for ASU Gammage & Assistant Vice President for Cultural Affairs.

For more details visit the ASURA website, <https://asura.asu.edu/>

Event: Annual Meeting

Date: Saturday April 12, 2014

Time: 1:00 p.m. to 3:00 p.m.

Location: Memorial Union, Alumni Lounge, ASU Tempe

The Annual Meeting of the ASU Retirees Association celebrates the conclusion of each year, as called for in our Bylaws. The meeting provides an opportunity for us to recognize the activities and accomplishments of the organization and the contributions of our members.

The meeting begins with a period to enjoy beverages, desserts, and your colleagues' company. The "business portion" of the meeting will feature:

- a presentation by Tomas Espinosa (see ASURA scholarship recipient article);
- short clips from the video history project;
- some initial results from the Member Survey (see article on survey);
- a presentation by ASU President Crow on what's going on at ASU.

Note: Friendship Village will supply transportation to and from Retirees Day for residents of Friendship Village.

On the Road Again!

Like to travel? Look over this menu and make your picks.

Your ASURA Travel Committee has organized the following trips for the spring and extending into the fall months. Details on each trip, including trip registration, is or will be available at our website (<https://asura.asu.edu/>) or by calling the office at 480-965-7668.

PLAY BALL! (Register now)

Join the Travel Committee on our pre-spring training **Tour of Chase Field** in downtown Phoenix. Our tour is scheduled for **Friday, February 14th** – what a sweetheart! – on Valentine’s Day.



We will take the Light Rail down to Chase Field, departing from the platform on Apache Blvd. just east of the McClintock/Apache intersection. Free parking is available in the underground parking garage located on the SE corner of Apache and McClintock. We will meet on the train platform no later than 9:30 AM.

The tour begins promptly at 10:30 AM and runs until noon. The tour will be followed by lunch in the TJ Friday’s restaurant inside Chase overlooking the field. Following lunch we will walk back to the Light Rail platform for return to Tempe by approximately 2PM.

More details on the ASURA website or by contacting Gary Anderson: gwander@asu.edu or 480-839-3542.

TAKE THE TRAIN (Pending later this spring)



Join us as we travel north for a special ride on the Verde Canyon Railroad along the Verde River. We will depart Tempe for the trip north to board the train for an exciting afternoon ride through spectacular scenery.

We will spend the night in one of the neighboring historic towns and have a wonderful western dinner. Next morning we will explore the historical sights a bit more before returning to Tempe.

Watch for date and time details as they develop. If you are interested, call the office at 480 965-7668, and we will make sure you are on the publicity list. Choo-choo.

TAKE THE RIVER BOAT

Join us on the Volga River for an incredible, relaxing, leisurely cruise from St. Petersburg to Moscow. We depart Phoenix May 15th and return May 31st. We will live on the boat and make stops at very interesting and historic places along the way. Bring your camera, you might want to take a picture or two. Ever see a baluga?

There is an informational session Monday, Feb 10th from 2-3 PM at the Tempe Public Library (SW corner of Rural & Southern) Connections Room.

You can also check out the website at asura.asu.edu or call Gary Kleemann at 480 839-8190 for more details. “Up a lazy river, how happy you could be....”

(Registration information: Contact Gary@asu.edu)

EXPLORE THE CASTLE (Coming next fall)

Do you know that Castle you always look at as you drive west on the I-10, the one off to the right on the hill? Tovrea Castle? What an attraction!

We are planning a trip and tour of the Castle next fall, likely October. Watch for details in future Prime Times, in your email and on the ASURA website. Cinderella, maybe?



FOUR CORNERS (Ever stand in four states at one time?)

Watch for details about a trip this fall that will enable you to do that. We’ll take your picture.



Obituaries: September 20, 2013 - January 17, 2014

by Becky Reiss

Please note that all obituary notices and photos, when available, are on our web site:
<http://asura.asu.edu/obituaries>

Name	Date of Death	ASU Affiliation
Bardrick, Ruth A.	Dec 5, 2013	Coordinator, Philosophy Department
Bender, Mary Palma	Nov 2, 2013	College/Department affiliation unknown
Bohnsack, Kurt	Nov 12, 2013	Summer Visiting Professor, Zoology
Brooke, Edna Mae Shurtliff	Dec 30, 2013	Professor, College of Business
Burke, Pattie Cotter Slattery	Dec 8, 2013	Professor, Interior Design Studio, College of Architecture
Caldwell, Ken	Dec 17, 2013	School of Music
Ciarico, Marcia Borland	Sep 15, 2013	Volunteer Usher, Gammage Auditorium
Clayton, Marjorie Dawn	Oct 28, 2013	Athletic Department
Daniel, Archie	Dec 20, 2013	Department/College unknown
Gill, Frances	Nov 6, 2013	Admissions, Graduate College
Grove, Robert A. "Bob"	Sep 20, 2013	Health and Safety Officer and Assistant Fire Marshall
Guerra, Manuel H.	Oct 27, 2013	College affiliation unknown
Haried, Andrew Amil (Andy)	May 21, 2013	Professor of Accountancy
Hennington, Jo Ann	Dec 6, 2013	Professor Emeritus, Assistant Dean, College of Business
Keaton, Alvin Eugene	Dec 16, 2013	Graduate Assistant, Psychology
Kronengold, Sylvia B.	Dec 16, 2013	Department/College Unknown
List, Nancy Lorraine	Oct 14, 2013	Secretary, Division of Technology
Lowe, Kathryn (Kate) Ann	Oct 18, 2013	Wife of John W. Lowe (deceased), Economics Professor, College of Business Administration
Makris, Thomas Arthur	Nov 29, 2013	Education Curriculum

(continued on page 11)

(continued from page 10)

Name	Date of Death	ASU Affiliation
Marick, Josephine DeBartoli	Nov 21, 2013	Faculty Associate, College of Nursing
McGrath, Zoe C.	Nov 1, 2013	Volunteer, ASU Faculty Wives Wife of Guy Dean McGrath, founding dean, College of Education (deceased)
Minnier, Jane D.	Dec 26, 2013	Financial Aids Administrator
Mirto, Cheryl High	Dec 25, 2013	Field Liaison, School of Social Work
Mitchell, Sherry	Sep 5, 2013	ASU Foundation
Mossman, Kenneth Leslie	Jan 8, 2014	Professor, Health Physics
Newhagen, Mariette "Mimi"	Oct 2, 2013	Assistant to Dean of Engineering
Ocvirek, Ida Olga	Dec 18, 2013	Admissions Department
Packer, R. Mark	Nov 13, 2013	Visiting Professor, Art
Parrish, Josephine Ann	Nov 2, 2013	English Professor
Placencia, Gilbert	Dec 20, 2013	College/Department affiliation unknown
Rausch, Jack Delano	Nov 15, 2013	Associate Director, School of Music and Professor Emeritus of Bassoon
Reeve, Patricia Anne	Dec 18, 2013	Program Coordinator, ASU West
Richardson, Deane	Sep 22, 2013	Chair of Health, Physical Education and Recreation Department
Sieker, Cheryl	Sep 21, 2013	Taught French
Stephenson, Robert K.	Dec 13, 2013	Department unknown
Stewart, Virginia Gravely	Dec 5, 2013	Director of Placement, School of Law
Sundquist, Kayle	Dec 1, 2013	College of Agriculture
Watson, Kenneth A.	Jan 2, 2014	Computer Systems Engineer
Wilson, Joan	Jul 24, 2013	Distinguished Visiting Professor
Wootton, Helen Virginia	Oct 6, 2013	Wife of ASU Professor of Education, Richard T. Wootton (deceased)

PRIME TIMES

P.O. Box 873308

Tempe, AZ 85287-3308

P: (480) 965-7668

F: (480) 965-7807

Prime Times is issued three times annually by the Arizona State University Retirees Association with special editions as needed. Articles welcome, subject to Board approval.

Mailing Address:

Prime Times
ASU Retirees Association
PO Box 873308
Tempe, AZ 85287-3308

Arizona State University Retirees Association:

ASURA has a volunteer-staffed office in the Community Services Building, 200 E. Curry Rd., Room 201B in Tempe, Arizona.

Office hours are generally Monday through Friday, 9:00 a.m. - noon and 1:00 p.m. - 4:00 p.m.

It is best to call beforehand.

Phone: 480-965-7668

Fax: 480-965-7807

Web Site: <http://asura.asu.edu>